

Ground displacement [m] in LOS direction



-0.15 -0.1 -0.05 0 0.05 0.1 0.15

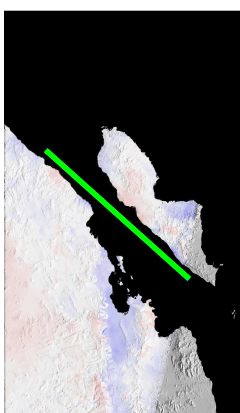
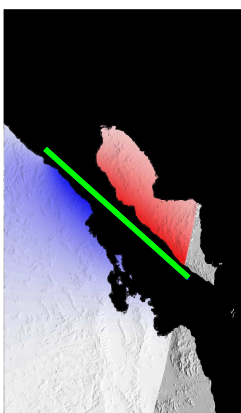
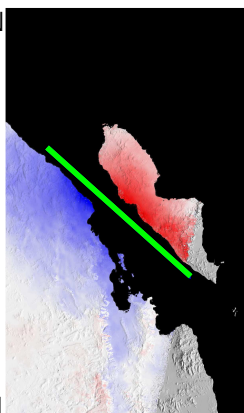
Data

Model

Residual

29.75 N

EnvD270

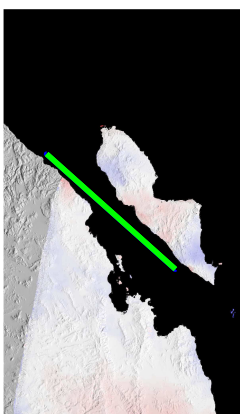
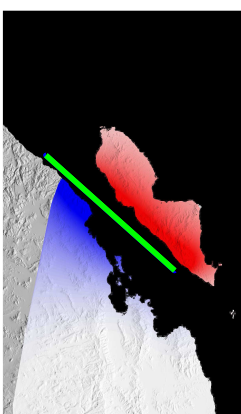
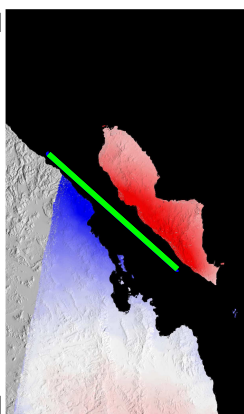


RMS: 11.8 mm  
Fault length: 70 km  
Depth: 16 km  
Lon: -113.52E  
Lat: 29.25N  
Dip fixed: 90 deg  
Strike fixed: 132 deg  
strike-slip: 1.1  
Mw: 7.1

28.50 N

29.75 N

EnvD499

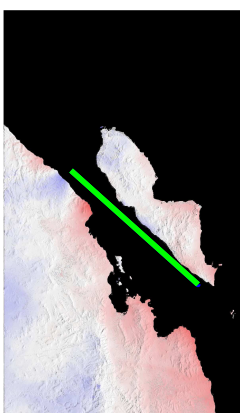
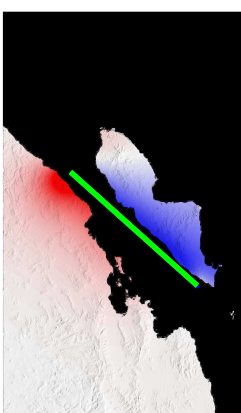
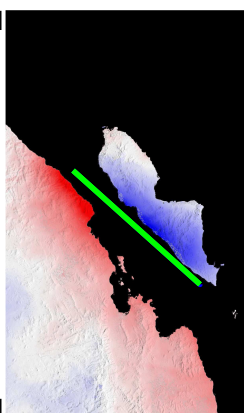


RMS: 10.9  
Fault length: 70 km  
Depth: 18 km  
Lon: -113.55E  
Lat: 29.26N  
Dip fixed: 90 deg  
Strike fixed: 132 deg  
strike-slip: 1.4 m  
Mw: 7.1

28.50 N

29.75 N

EnvA034



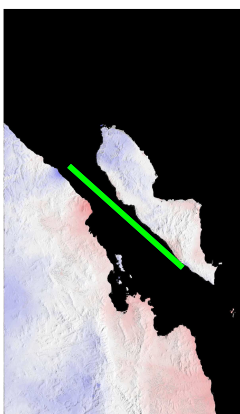
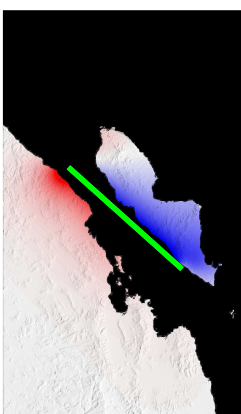
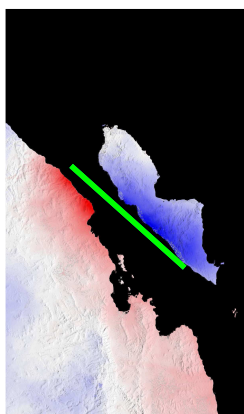
RMS: 21.6  
Fault length: 70 km  
Depth: 10 km  
Lon: -113.45E  
Lat: 29.20N  
Dip fixed: 90 deg  
Strike fixed: 132 deg  
strike-slip: 2.1 m  
Mw: 7.1

28.50 N

EnvA034  
(not corrected  
for interseismic)

29.75 N

28.50 N



RMS: 16.8  
Fault length: 62 km  
Depth: 7 km  
Lon: -113.48E  
Lat: 29.23N  
Dip fixed: 90 deg  
Strike fixed: 132 deg  
strike-slip: 2.0 m  
Mw: 6.9

114 W

113 W

114 W

113 W

114 W

113 W